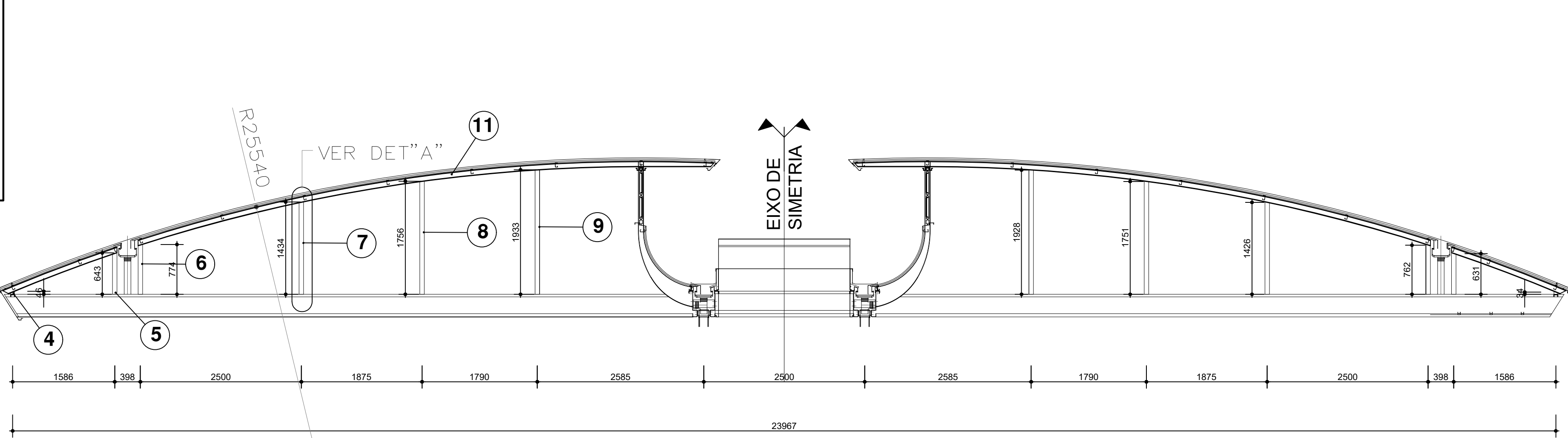
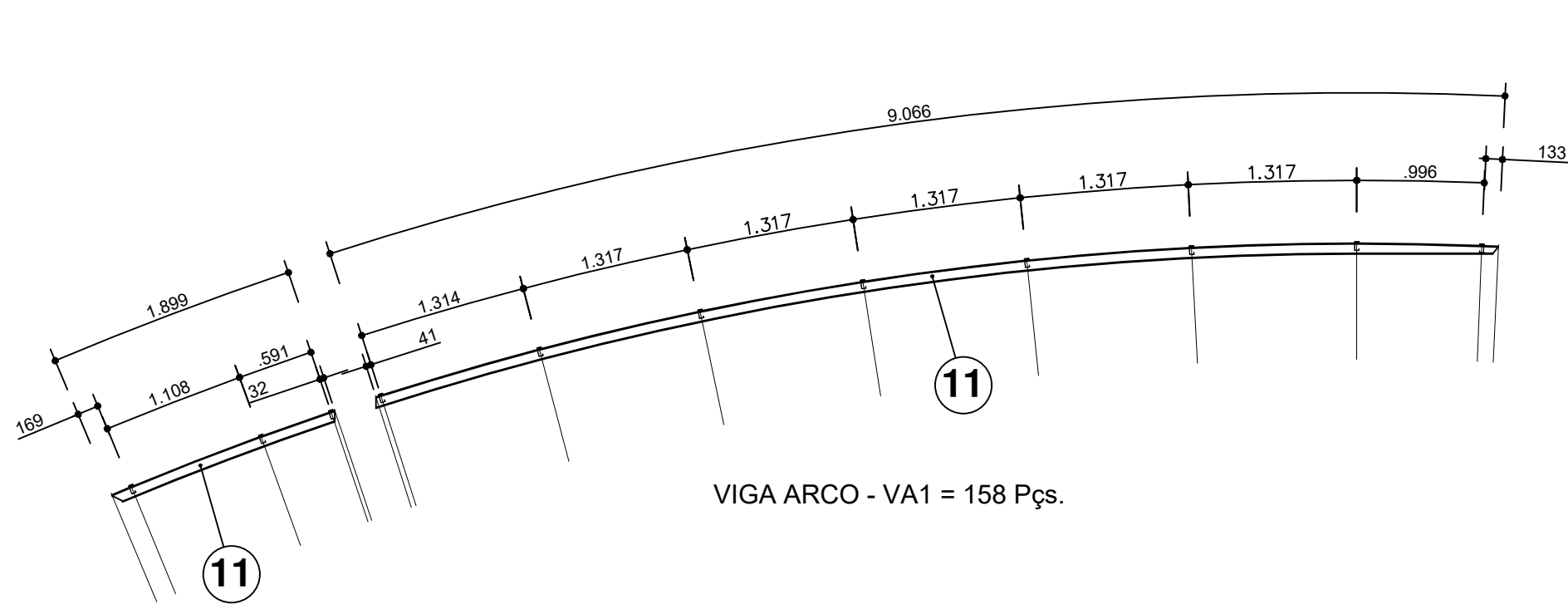


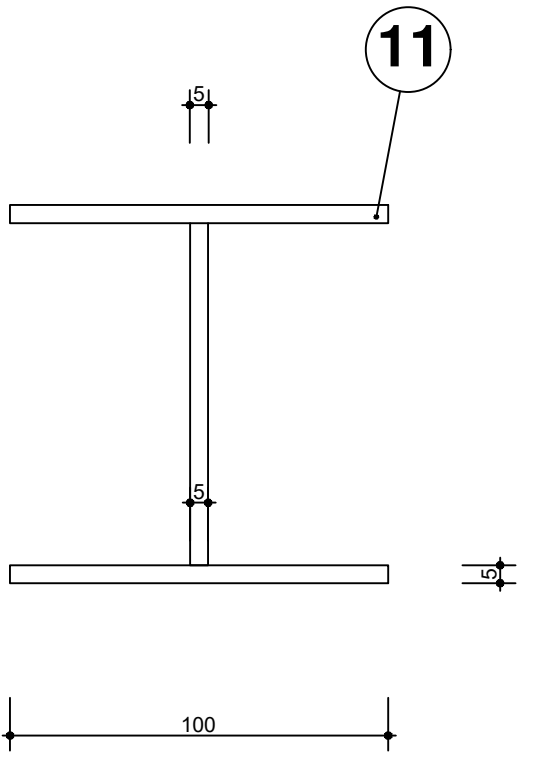
IMPLANTAÇÃO DA COBERTURA - Esc. 1/100  
JUNTA - 2



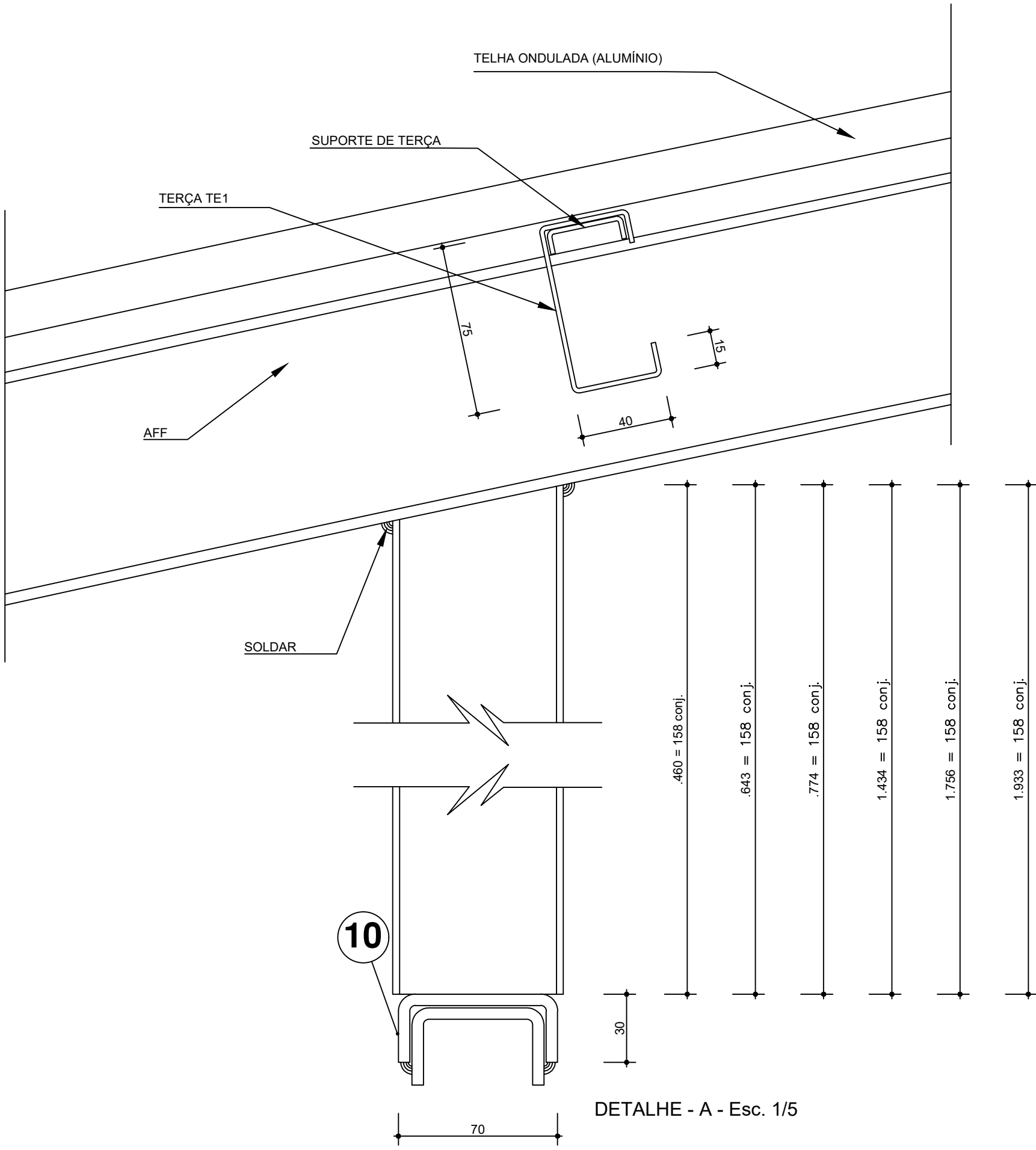
CORTE - A - A - Esc. 1/25  
VIGA ARCO - VA1 = 158 Pcs.



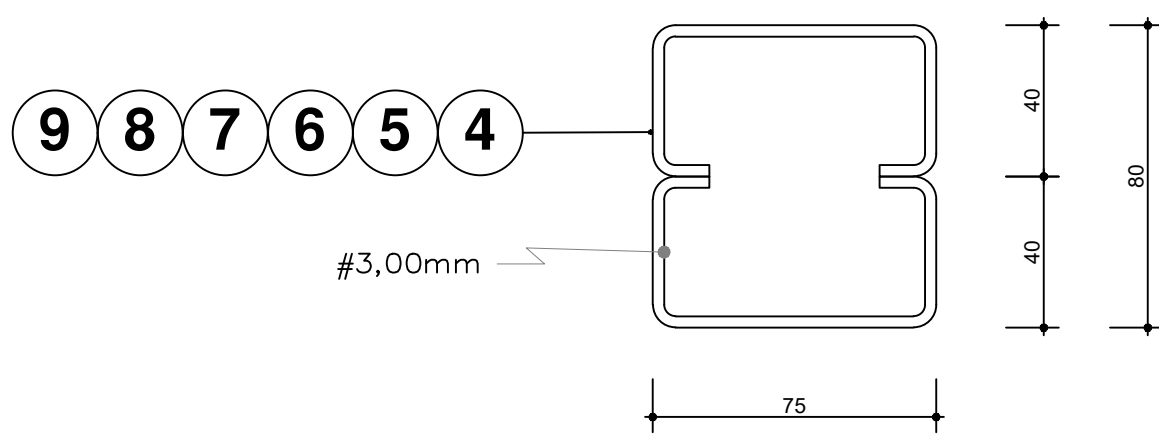
VIGA ARCO - VA1 = 158 Pcs.



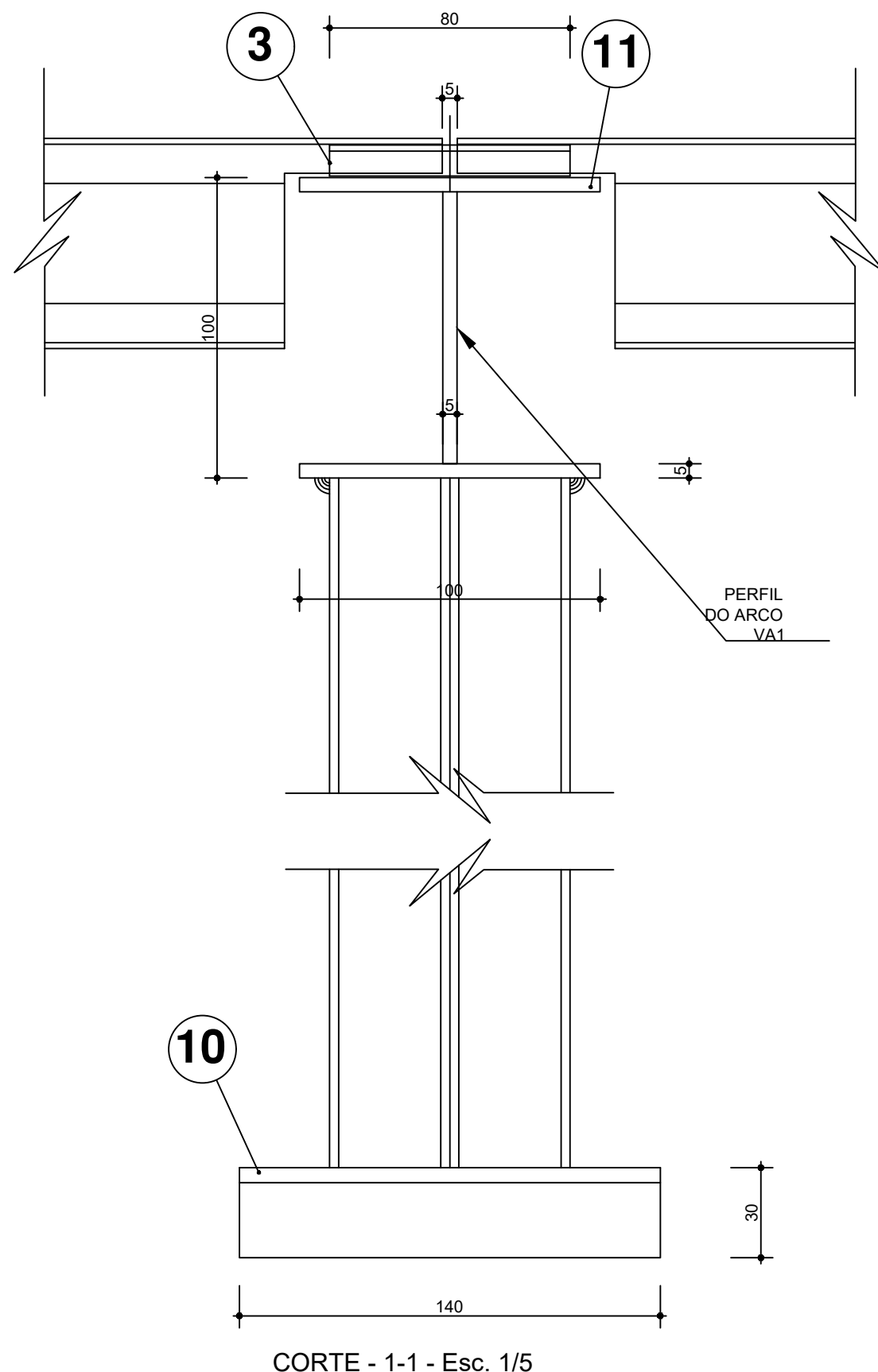
ARCO TÍPICO  
- Esc. 1/5



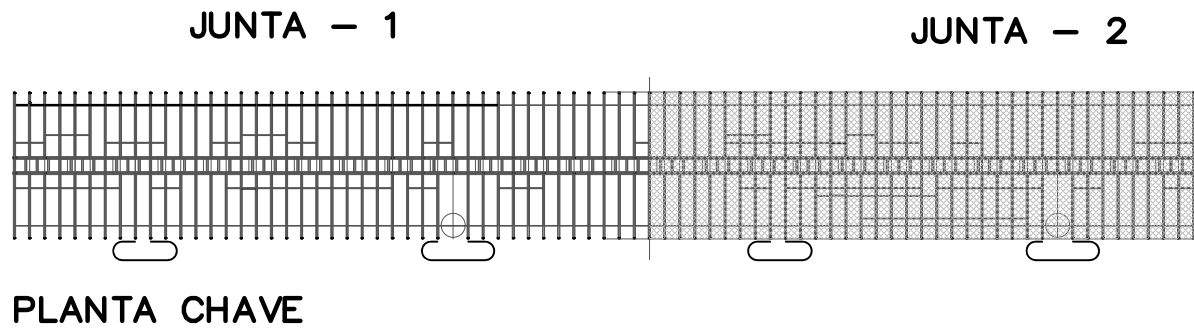
DETALHE - A - Esc. 1/5



MONTANTE TÍPICO  
- Esc. 1/5



CORTE - 1-1 - Esc. 1/5



PLANTA CHAVE

RELAÇÃO DE MATERIAL						
POS	QTD	DISCRIMINAÇÃO	PERFIL	MATERIAL	COMP (mm)	PESO (kg)
4	316	PILARETE	Ue 75x40x15	#3.00	46	56
5	316	PILARETE	Ue 75x40x15	#3.00	643	782
6	316	PILARETE	Ue 75x40x15	#3.00	774	941
7	316	PILARETE	Ue 75x40x15	#3.00	1434	1.743
8	316	PILARETE	Ue 75x40x15	#3.00	1756	2.135
9	316	PILARETE	Ue 75x40x15	#3.00	1933	2.350
10	948	SUP. FIX. PILARETE	U 70x30	#4.75	140	551
11A	158	ARCO VA 1	CE 100x11	VIGA SOLD	1900	3.302
11B	158	ARCO VA 1	CE 100x11	VIGA SOLD	9066	15.757
12						
13					TOTAL	27.617